

Quick Start Guide

COOLPIX
S6
DIGITAL CAMERA

Thank you for purchasing a Nikon digital camera. Should you need technical support, we offer a number of options available 24 hours a day, 7 days a week.

Internet:

Visit www.nikontechusa.com, Nikon's support home page. Here you can:

- Search Nikon's continuously updated Knowledge Database for the latest technical support information.
- Use "Ask Nikon a Question" to receive a prompt reply from a Nikon engineer to your e-mail.
- Download the latest versions of Nikon software or firmware updates for your product, register to receive e-mail notification for software or firmware updates.

Telephone:

Call **1-800-NIKON-UX (1-800-645-6689)** for help, 24 hours a day, 7 days a week, for support and product questions. Our professional advisers are standing by to help with your digital camera needs.

Package Contents

Remove the camera and accessories from the box and confirm that you have all the items listed below.

COOLPIX S6
digital cameraQuick Start Guide
(this guide)Guide to Digital
PhotographyEN-EL8 rechargeable
battery (with terminal
cover)

MV-15 COOL-STATION

EH-64 AC adapter
(with power cable)

PV-11 dock insert



Camera strap



UC-E10 USB cable

EG-E5000 audio/video
cable

Registration card



Warranty

Wireless Camera Setup Utility /
PictureProject installer CD (yellow)

PictureProject reference manual CD (silver)

IMPORTANT NOTICE ABOUT ACCESSORIES

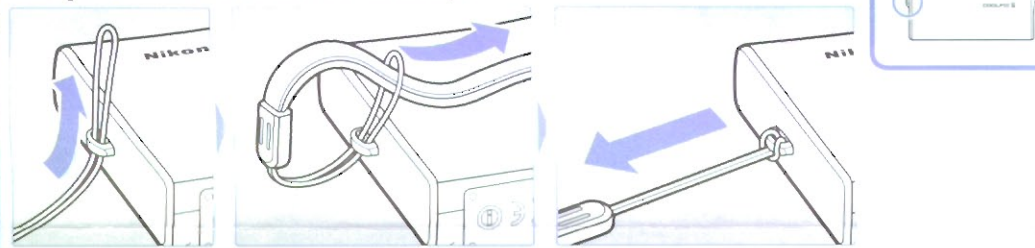
Your Nikon COOLPIX digital camera is designed to the highest standards and includes complex electronic circuitry. Only Nikon accessories, such as chargers, batteries, and AC adapters are certified by Nikon specifically for your Nikon COOLPIX camera and are engineered and tested to operate within the requirements of the electronic circuitry of our cameras.

THE USE OF NON-NIKON ACCESSORIES MAY DAMAGE YOUR CAMERA AND WILL VOID YOUR NIKON WARRANTY.

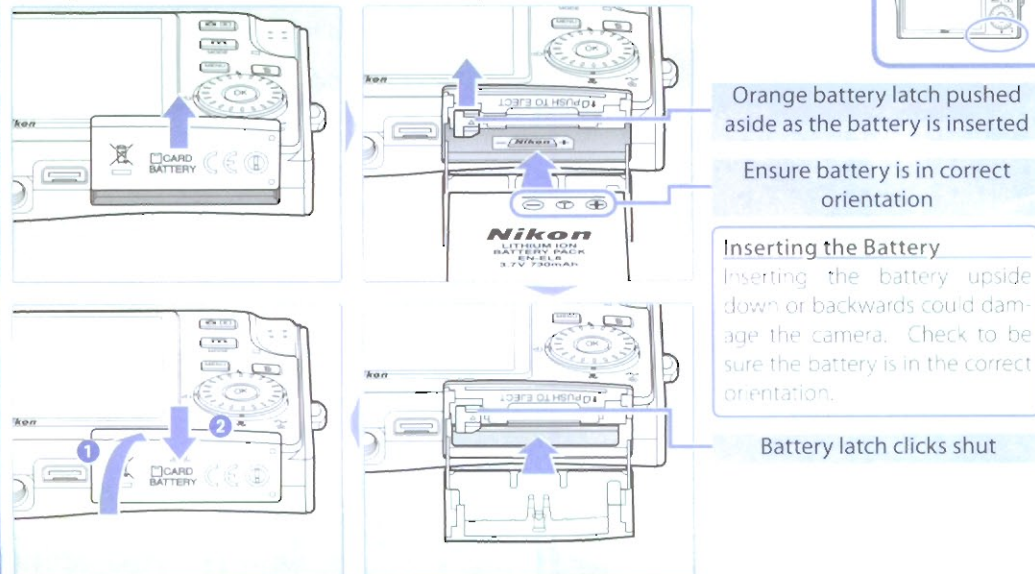
Genuine Nikon accessories are available through your Nikon-authorized dealer or from our web site at www.Nikonmall.com.

Setup

Step 1—Attach the Strap



Step 2—Insert the Battery



Orange battery latch pushed
aside as the battery is inserted

Ensure battery is in correct
orientation

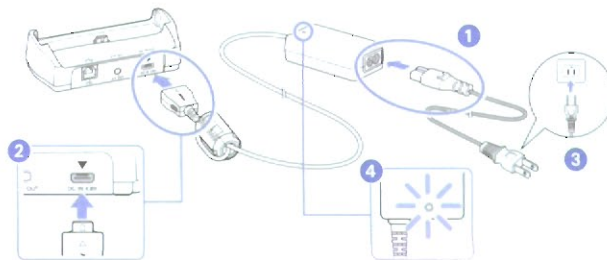
Inserting the Battery

Inserting the battery upside
down or backwards could damage
the camera. Check to be
sure the battery is in the correct
orientation.

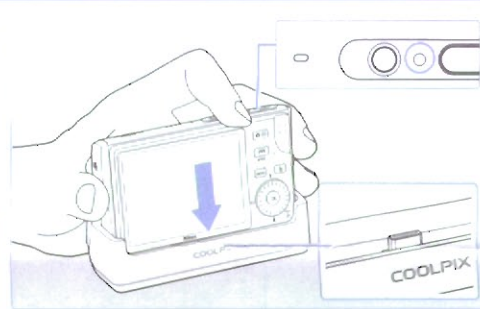
Battery latch clicks shut

Step 3—Charge the Battery

- 3.1** Plug the power cord into the AC adapter (1) and connect the adapter to the COOL-STATION (2). Plug the AC adapter into a power outlet (3) and confirm that the power lamp is lit (4).



- 3.2** Confirm that the camera is off (if the power-on lamp is lit, press the power switch to turn the camera off). Place the camera in the COOL-STATION as shown, making sure that the camera connector is fully inserted in the matching connector on the COOL-STATION.



The battery can also be charged by turning the camera off and connecting the AC adapter directly to the camera multi connector.

- 3.3** The indicator lamp next to the camera monitor will blink green while the battery charges.

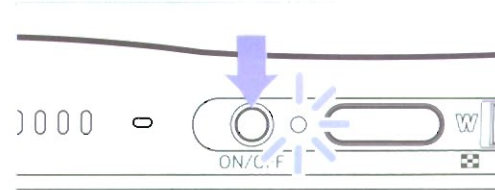
An exhausted battery recharges in about two hours.

Charging is complete when the lamp stops blinking. Remove the camera from the COOL-STATION and unplug the AC adapter.



Step 4—Turn the Camera On

Press the power switch to turn the camera on.



Auto off (Stand-by Mode)

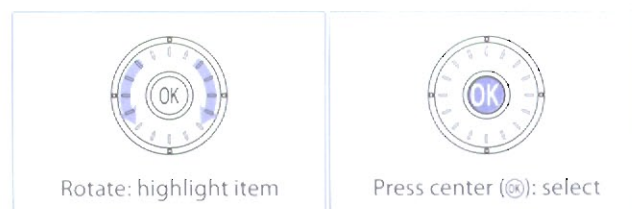
The camera monitor automatically dims to save power if no operations are performed for about five seconds during shooting. Operating the camera reactivates the display. The monitor will turn off if no operations are performed for about a minute; if no operations are performed for another three minutes, the camera will turn off.

Step 5—Choose a Language and Set the Clock

A language-selection dialog is displayed in the monitor the first time the camera is turned on. Use the rotary multi selector to choose a language and set the time and date.

The Rotary Multi Selector

Use the rotary multi selector to navigate the camera menus.



- 5.1** Highlight language.

- 5.2** Confirmation dialog displayed.

- 5.3** Highlight Yes.

- 5.4** TIME ZONE menu displayed.

- 5.5** Display world time zones.

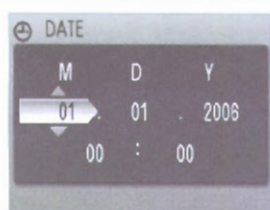
- 5.6** Select home time zone.

* If daylight saving time is in effect, press rotary multi selector down to highlight **DaylightSaving** and press \odot to select. Press rotary multi selector up to return to Step 5.4.

5.7



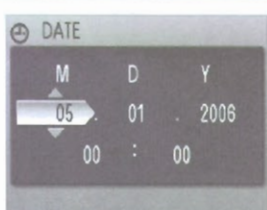
Display DATE menu.



5.8



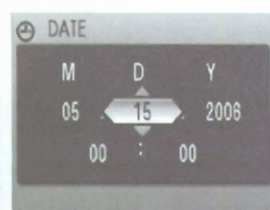
Edit Month (order of Month, Day, and Year may differ in some areas).



5.9



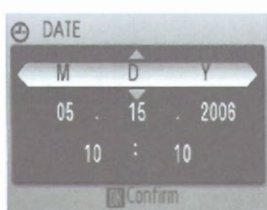
Select Day. Repeat Steps 5.8–5.9 to edit Day, Year, hour, and minute.



5.10



Highlight M D Y.



5.11



Choose date display order.



5.12



Set clock.



Taking Pictures

Step 1—Check the Battery Level and Number of Exposures Remaining

Internal memory/memory card indicator

Display	Description
	Pictures will be recorded to internal memory.
	Pictures will be recorded to memory card.

Battery level indicator

Display	Description
NO ICON	Battery fully charged.
	Low battery. Prepare to recharge or change battery.
WARNING!! BATTERY EXHAUSTED	Battery exhausted. Recharge or change battery.

Number of exposures remaining

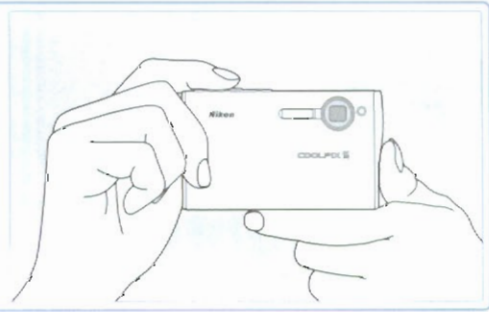
[13]



Step 2—Frame the Picture

2.1

Hold the camera steady in both hands, keeping your fingers and other objects away from the lens, flash, self-timer lamp, and microphone.



2.2

Position the subject in the center focus area and use the zoom control to frame the subject in the center of the monitor, shown by the center AF area ().

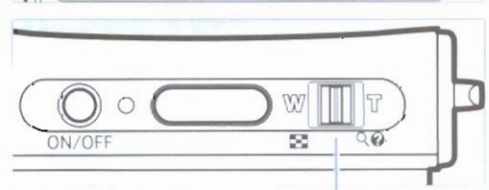


Focus area



Zoom control

Select T to zoom in on the subject so that it fills a larger area of the frame. Select W to zoom out, increasing the area visible in the frame.



Step 3—Focus

Lightly press the shutter-release button about halfway, stopping when you feel resistance. The camera will set focus and exposure for the subject in the center focus area. Focus and exposure remain locked while the shutter-release button is pressed halfway.

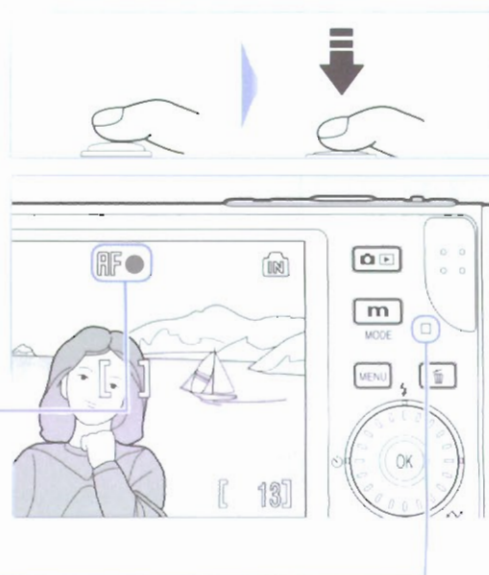
With the shutter-release button pressed halfway, check focus and flash:

Focus indicator

	On (green)	Subject in focus.
	Blinks (red)	Camera unable to focus. Change composition and try again.

Flash lamp

	On (red)	Flash will fire when picture is taken.
	Blinks (red)	Flash charging.
	Off	Flash off or not required.



Step 4—Take the Picture

Smoothly press the shutter-release button the rest of the way down to release the shutter and take the picture. To prevent blur, avoid moving the camera while pressing the shutter-release button.



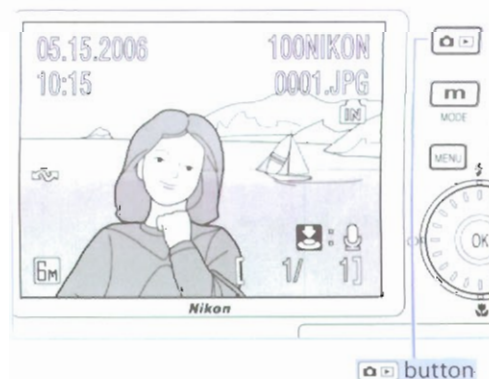
Where Are My Pictures Stored?

The camera stores pictures in internal memory (approximately 20 MB) or on removable Secure Digital (SD) memory cards (available separately; a list of approved memory cards is provided on page 90 of the *Guide to Digital Photography*). Pictures are stored in internal memory when no memory card is inserted.

Viewing Pictures

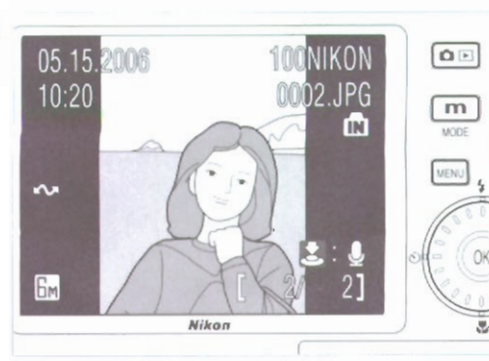
Step 1—Press the Button

A picture will be displayed in the monitor.



button

Pictures taken with the camera in "tall" orientation are displayed as shown at right.

Use the rotary multi selector to view other pictures. Rotate the rotary multi selector *clockwise* to view pictures in the order recorded, *counter-clockwise* to view pictures in reverse order.

View previous picture

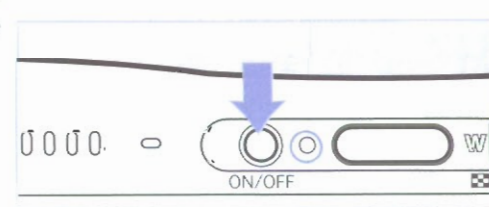


View next picture

To delete the current picture, press the button. A confirmation dialog will be displayed; highlight **Yes** and press the button.

Step 2—Turn the Camera Off

Press the power switch to turn the camera off. The power-on lamp will go out.



Windows Users

OS: Pre-installed versions of Windows XP Home Edition, Windows XP Professional, Windows 2000 Professional, Windows Millennium Edition (Me), Windows 98 Second Edition (SE).
For the latest information on supported operating systems, visit:
<http://www.nikonusa.com/>

Depending on the version of PictureProject installed, the dialogs and messages displayed may vary from those shown here.

Windows XP/Windows 2000 Professional

When installing, using, or uninstalling PictureProject, log on as the "Computer administrator" (Windows XP Home Edition, Windows XP Professional) or "Administrators" (Windows 2000 Professional).

Before Connecting the Camera

Before connecting your camera to a computer, make sure that PictureProject is installed and you have taken at least one picture with your camera.

Use a Reliable Power Source

To prevent the camera from turning off unexpectedly during connection, use fully charged batteries or the supplied AC adapter.

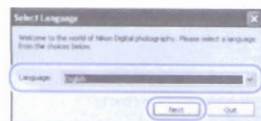
Note to Users of Nikon Capture

For information on using PictureProject with Nikon Capture, see the *PictureProject reference manual* (on CD).

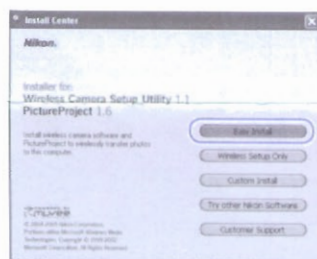
Install PictureProject

1 Turn the computer on and insert the PictureProject installer CD into the CD-ROM drive.

2 Select a language and click **Next**.



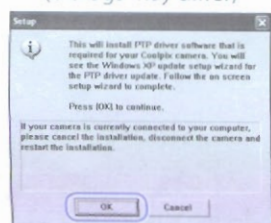
3 The Install Center program will launch automatically. Click **Easy Install** to install camera device drivers (Windows XP and Windows 98SE only), Panorama Maker, Apple QuickTime, PictureProject, Wireless Camera Setup Utility (Windows XP only), PictureProject In Touch and Microsoft DirectX 9. Note that there may be a delay of up to thirty seconds between each installation; do not perform any other operations until all components are installed.



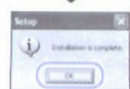
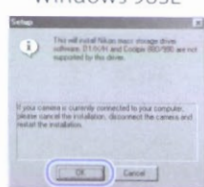
Camera Drivers (Windows XP/Windows 98SE Only)

After clicking **Easy Install**, users of Windows XP or Windows 98SE may be prompted to install the drivers required for the COOLPIX S6. Click **OK** and follow the on-screen instructions to complete installation.

Windows XP
(dialogs may differ)

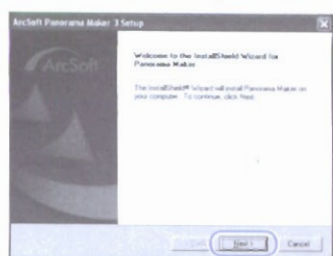


Windows 98SE



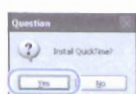
4 Panorama Maker

The Panorama Maker install wizard will start. Follow the on-screen instructions to complete installation.



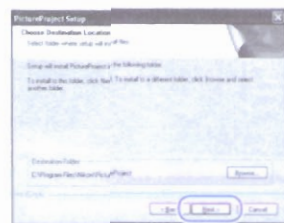
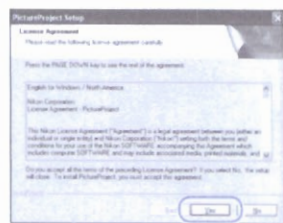
5 Apple QuickTime

Click **Yes** to install QuickTime (some time may be required to complete installation on some systems).

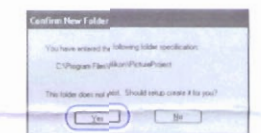


6 PictureProject

The PictureProject installer will start. Click **Yes** to accept the terms of the license agreement. The destination folder for PictureProject will be displayed; click **Next**.



7 Click **Yes** to create a new folder for PictureProject.



8 Click **Yes** to create a shortcut to PictureProject on the desktop.



9 Click **Finish** to exit the PictureProject installer.



Windows XP (SP1 or Later)

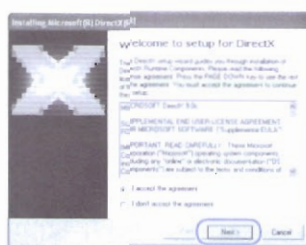
The Wireless Camera Setup Utility will be installed. Follow the on-screen instructions to configure the camera for wireless transfer based on the wireless LAN settings for your computer (wireless setup can be performed again at any time if cancelled). For more information, see the *Nikon Guide to Digital Photography*.

10 The PictureProject In Touch Updater installer will start. Click **Next** and follow the on-screen instructions to complete installation.



11 Microsoft DirectX 9

Panorama Maker and Pictmotion options require DirectX version 9 or later. If an earlier version is installed, the dialog shown at right will be displayed. Follow the on-screen instructions to install DirectX 9.



12 If prompted to restart the computer, follow the on-screen instructions.

13 The PictureProject Import Assistant will be displayed.

The Import Assistant is used to catalog pictures already on the computer for display in PictureProject. To proceed without cataloging existing pictures, click **Close** (existing pictures can be cataloged manually at any time; see the *PictureProject reference manual* for details).

For more information on importing pictures into PictureProject, see the *PictureProject Reference Manual* (on CD).



Installation is now complete. Remove the PictureProject installer CD from the CD-ROM drive.

Software Updates

If the computer is connected to the Internet, PictureProject will periodically check for updates. If an update is detected when PictureProject starts, an update dialog will be displayed. Follow the on-screen instructions to update to the latest version of PictureProject.

Transferring pictures to a computer allows you to view, store, and organize your pictures. To transfer your pictures, you will need PictureProject. If you use a Windows computer, follow the instructions below to install PictureProject and transfer your pictures. For further information, see the *PictureProject Reference Manual* (on CD).

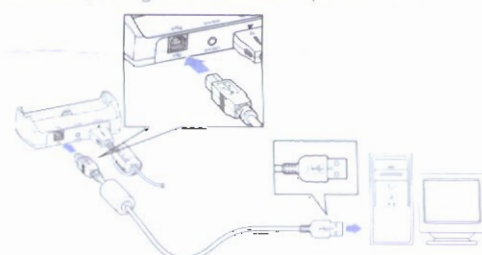
Users of Windows XP (SP1 or later) computers that are part of a wireless network or equipped with a wireless LAN adapter can transfer pictures to the computer over a wireless network. The Wireless Camera Setup Utility will be installed when installation of PictureProject is complete, and the camera will be configured for wireless transfer. See pages 63 to 72 of the *Nikon Guide to Digital Photography* for more information.

View pictures on a computer

Before Connecting the Camera

Before connecting your camera to a computer running Windows 2000 Professional, Windows Me, or Windows 98SE, you need to change the USB option in the camera setup menu to **Mass Storage**. Display the camera setup menu as described in the *Nikon Guide to Digital Photography*. Select **Interface > USB** and change the selection from **PTP** to **Mass Storage**.

1 Connect the COOL-STATION to the computer as shown in the illustration, using the USB cable provided.



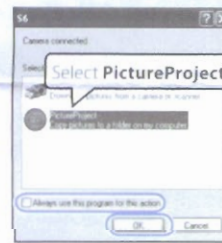
2 If the power-on lamp is on, press the power switch to turn the camera off. If you will be transferring pictures from a memory card to the computer, insert the card in the camera.

3 Place the camera in the COOL-STATION and turn the camera on. PictureProject Transfer will be displayed in the computer monitor; click **Transfer** to transfer all pictures in internal memory to the computer or, if a memory card is inserted in the camera, to transfer all pictures on the card to the computer.



AutoPlay (Windows XP)

When you turn the camera on, the dialog shown at right will be displayed. Select **PictureProject** and click **OK** to start PictureProject. To bypass this dialog in the future, check **Always use this program for this action**.



4 When transfer is complete, the pictures will be displayed in the PictureProject window.



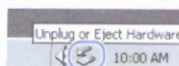
5 After confirming that transfer is complete, disconnect the camera as described below.

Windows XP Home Edition/Professional

Turn the camera off and remove it from the COOL-STATION.

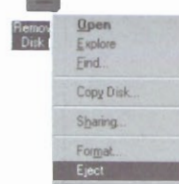
Windows 2000 Professional/Windows Millennium Edition (Me)

Click the "Unplug or Eject Hardware" icon () in the taskbar and remove the camera from the system. Turn the camera off and remove it from the COOL-STATION.



Windows 98 Second Edition (SE)

In My Computer, click with the right mouse button on the removable disk corresponding to the camera and select **Eject** from the menu that appears. Turn the camera off and remove it from the COOL-STATION.



More information on PictureProject is available on the PictureProject reference manual CD, which contains manuals that can be viewed using Adobe Acrobat Reader 4.0 or later.

If Adobe Acrobat Reader version 4.0 or later is not already installed on your computer, install the copy of Adobe Acrobat Reader 5 included on the PictureProject reference CD. You can then double-click the **INDEX.pdf** icon on the PictureProject reference manual CD for more information about installing and using PictureProject.

Macintosh Users

OS: Mac OS X version 10.1.5 or later (version 10.2.8 or later required for Burn Disc option).

For the latest information on supported operating systems, visit:
<http://www.nikonusa.com/>

Depending on the version of PictureProject installed, the dialogs and messages displayed may vary from those shown here.

Installing PictureProject

When installing, using, or uninstalling PictureProject, use an account with administrator privileges.

Before Connecting the Camera

Before connecting your camera to a computer, make sure that PictureProject is installed and you have taken at least one picture with your camera.

Use a Reliable Power Source

To prevent the camera from turning off unexpectedly during connection, use fully charged batteries or the supplied AC adapter.

Note to Users of Nikon Capture

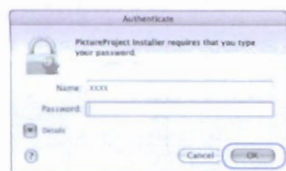
For information on using PictureProject with Nikon Capture, see the *PictureProject reference manual* (on CD).

Install PictureProject

- 1 Turn the computer on and wait for it to start up.
- 2 Insert the PictureProject installer CD into the CD-ROM drive. Double-click the PictureProject installer CD icon on the desktop, then double-click the **Welcome** icon.
- 3 A language-selection dialog will be displayed; select a language and click **Next**.
- 4 The Install Center program will launch automatically. Click **Easy Install** to install Panorama Maker, PictureProject, Wireless Camera Setup Utility (Mac OS X version 10.3 or later only), PictureProject In Touch and QuickTime (QuickTime will not be installed if the version already installed on the computer is up to date).
- 5 **Panorama Maker**
The Panorama Maker installer will start. Follow the on-screen instructions to complete installation.



- 6 Enter the administrator name and password and click **OK**.

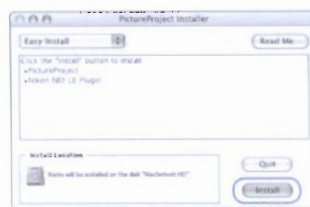


- 7 The PictureProject license agreement will be displayed. After reading the license agreement, click **Accept** to accept the terms and conditions of the agreement and view the ReadMe file. Take a few moments to read this file, which may contain important information that could not be included in this manual. After viewing the ReadMe file, click **Continue** to proceed with installation.



8 PictureProject

The PictureProject installer will start. Click **Install**.



- 9 The dialog at right will be displayed. Click **Yes**.



- 10 Click **Yes** to add PictureProject to the Dock.



Mac OS X (Version 10.3 or Later)

The Wireless Camera Setup Utility will be installed. Follow the on-screen instructions to configure the camera for wireless transfer based on the wireless LAN settings for your computer (wireless setup can be performed again at any time if cancelled). For more information, see the *Nikon Guide to Digital Photography*.

- 11 Click **Quit** to complete installation of PictureProject.



- 12 The PictureProject In Touch Updater installer will start. Follow the on-screen instructions to complete installation.



Apple QuickTime

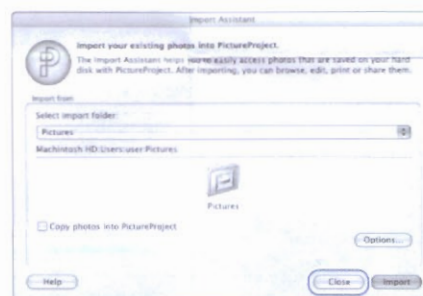
If an out-of-date version of QuickTime is installed, the QuickTime installer will start automatically. Follow the on-screen instructions to complete installation. When the dialog shown at right is displayed, click **Continue**. Do not complete the "Registered To," "Organization," and "Registration Number" fields.



On some systems, the QuickTime installer may require considerable time to complete installation.

- 13 If prompted to restart the computer, follow the on-screen instructions. When the computer restarts, log in to the "Admin" account.

- 14 The PictureProject Import Assistant will be displayed. The Import Assistant is used to catalog pictures already on the computer for display in PictureProject. To proceed without cataloging existing pictures, click **Close** (existing pictures can be cataloged manually at any time; see the *PictureProject reference manual* for details).



Installation is now complete. Remove the PictureProject installer CD from the CD-ROM drive.

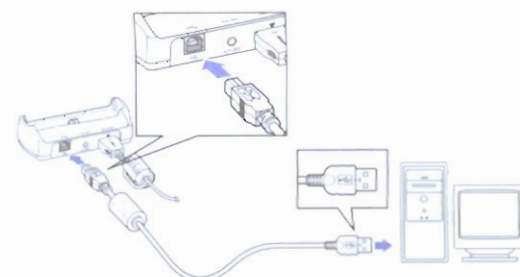
Software Updates

If the computer is connected to the Internet, PictureProject will periodically check for updates. If an update is detected when PictureProject starts, an update dialog will be displayed. Follow the on-screen instructions to update to the latest version of PictureProject.

Users of Mac OS X (version 10.3 or later) computers that are part of a wireless network or equipped with a wireless LAN adapter can transfer pictures to the computer over a wireless network. The Wireless Camera Setup Utility will be installed when installation of PictureProject is complete, and the camera will be configured for wireless transfer. See pages 63 to 72 of the *Nikon Guide to Digital Photography* for more information.

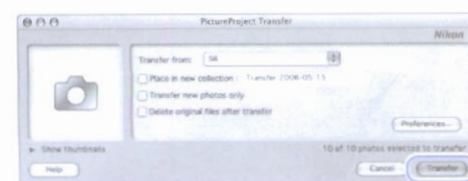
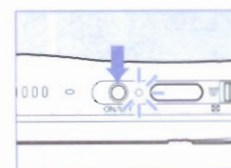
View pictures on a computer

- 1 Connect the COOL-STATION to the computer as shown in the illustration, using the USB cable provided.



- 2 If the power-on lamp is on, press the power switch to turn the camera off. If you will be transferring pictures from a memory card to the computer, insert the card in the camera.

- 3 Place the camera in the COOL-STATION and turn the camera on. PictureProject Transfer will be displayed in the computer monitor; click **Transfer** to transfer all pictures in internal memory to the computer or, if a memory card is inserted in the camera, to transfer all pictures on the card to the computer.



- 4 When transfer is complete, the pictures will be displayed in the PictureProject window.



Turn the camera off and remove it from the COOL-STATION.

More information on PictureProject is available on the PictureProject reference manual CD, which contains manuals that can be viewed using Adobe Acrobat Reader 4.0 or later.